

A person wearing a green sweatshirt with a "NORFOLK ANGLERS CLUB" logo is holding a large, flat, brown fish (flounder) vertically. The fish has a mottled pattern of dark spots and a lighter, ribbed edge. The person's hands are visible at the top of the fish. The background is a bright blue sky and a body of water.

THE NORFOLK ANGLERS CLUB

# WIRELINE

JULY 2022

## What's Inside

Guest Speaker: Wayne Seymour & Jay Whitfield, *Princess Anne Distributing Co.*, Inshore Kite Fishing Techniques

Fishing Tips: Aaron Maurer with *The Savage 3 Tackle Company* on targeting summer flounder

### Fishing Reports:

- Chesapeake Bay: Cobia
- Little Creek/Pretty Lake: Spot
- Surf Fishing: Roundhead, Flounder, Croaker, Spot
- CBBT: Bluefish, Spanish Mackerel, Cobia, Triggerfish
- Offshore: Yellowfin Tuna, Blueline Tilefish, Black Sea Bass
- Inshore Wrecks: Tautog, Black Sea Bass, Flounder, Triggerfish
- James River/Chuckatuck Creek: Striped Bass, Puppy Drum, Spot, Perch



# Leadership Notes...

Fellow Norfolk Anglers,

This month we celebrate America's Independence Day. It's another opportunity to reflect on those who sacrificed to establish our nation and sacrifice every day to protect our freedom. In recognition of those who serve our nation there's the Military Appreciation Day - Tidewater event at the end of this month. It's a great event to show our appreciation for our military personnel's service. Check out the MAD-Tidewater info in this edition and volunteer your support for this great program.

The challenge among the southside anglers club is this month. The Hunt for the Hardheads challenge is Saturday, July 23rd. We still need volunteers to help out with fishing and the cookout!

- Will



Special THANKS! To our Norfolk Anglers who supports the "Love Liz Fest" on June 4th at the Elizabeth River Park. Norfolk Anglers Ned Smith, George Grinnan, Charles Wood and Daughters Annie & Raeann (pictured left). They helped make the day special for local kids at the fishing clinic.

## Meeting

Guest Speaker: Wayne Seymour and Jay Whitfield, *Princess Anne Distributing Co.* Inshore kite fishing techniques.

Many anglers have only heard about kite fishing. Others think it's something only serious offshore anglers employ. That's simply not the case. Wayne and Jay will be sharing kite fishing techniques that boats of any size can use to target inshore species using live bait. Species like cobia, king mackerel, spanish mackerel, and drum can effectively be kite fished. Join us on Monday, July 18th to learn tips and techniques to target inshore species (works offshore too).



**Important:**  
**JULY 18th**

**NAC Meeting at Boil Bay  
Seafood City, Norfolk, VA**

## Publishers NOTES

Editor:

Wendy Bransom

NorfolkAnglersClubEditor@gmail.com

## NAC OFFICERS

President:

Will Bransom

Vice President:

Henry Troutner

Treasurer:

Ned Smith

Awards Program:

Ike Eisenhower

Events Coordinator:

Mike Hubert

Assistant Events Coordinator:

Alex "AJ" Perez, Jr

Membership:

Ben Capps

Member at Large:

Alex Perez, Sr.

Webmaster:

Pat Hirsch

[pfhirsch@yahoo.com](mailto:pfhirsch@yahoo.com)

Contact us at;

[NorfolkAnglersClub@gmail.com](mailto:NorfolkAnglersClub@gmail.com)

Norfolk Anglers Club

P.O. Box 8422

Norfolk, Virginia 23503-0422



## Club Calendar

### July

Thurs, July 7th: 8:00am-12:00pm, USFWS Kids  
Surf Fishing Class, Back Bay Wildlife Refuge  
Mon, July 11th: Virginia Recreational Fishing Advisory  
Board Virtual Meeting  
Thurs, July 21st: 8:00am-12:00pm, USFWS Kids  
Surf Fishing Class, Back Bay Wildlife Refuge  
Mon, July 18th: Regular Club Meeting, Boil Bay  
Seafood City, Norfolk  
Sat, July 23rd: Hunt for the Hardheads Tournament,  
Willoughby Harbor Marina  
Tues, July 26th: Virginia Marine Resources  
Commission Meeting, Fort Monroe



Earlier this year, we told you about the RecFish app being developed by Dr. Lisa Kellogg and colleagues at the Virginia Institute of Marine Science. Its goal is to encourage recreational anglers to collect and contribute catch data to help improve fisheries science. Once it's fully developed, the user-friendly, free app will also tell anglers the species and length of their catch and whether it is legal to keep and safe to eat.

Dr. Kellogg says that, with the help of photos you submitted, the computer model can now identify 60 fish species with 95% accuracy and another 20 species are in the works. That represents thousands of submitted pictures!

You can help by going to [www.recfish.org](http://www.recfish.org) and uploading your fish photos. RecFish especially needs photos of:

- Kingfish (a.k.a. Roundheads, Kingcroaker, Whiting, Sea Mullet)
- Flounder and other flatfish

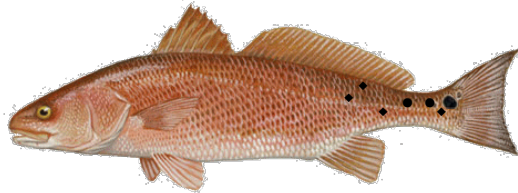
Phase 2 of app development is almost complete, and, when it is, you will be able to use the app to upload your fish photos directly from your phone. Until then, keep those pictures coming at [www.recfish.org](http://www.recfish.org)!



Photo: Joy Baber



# Club Members Tournament for 2022



## Redfish "Spots" Tournament

### Rules

- Must be a Norfolk Anglers Club Member
- Tournament for fish caught between January 1, 2022 and December 31, 2022
- Must have the Norfolk Anglers Club decal in the photo with the fish on a measuring device\* showing the total length of the fish. See NAC Prize Fish Contest Rules for measuring info. \*Entries received with decal and no measurement can only be judged by number of spots.
- Red Drum/Redfish up to 26 inches in length only and caught in Virginia and North Carolina waters
- Awards determined by 1st: number of Spots (on one side), 2nd: Largest Fish up to 26 inches, 3rd: Date of Catch
- Entries submitted on the Club Prize Fish Entry Form with photo (can be sent electronically to [NorfolkAnglersClub@gmail.com](mailto:NorfolkAnglersClub@gmail.com))
- No entry fee except the cost of the decal (\$1)
- \$50.00 Gift Card to the 1st Place Angler, \$25.00 Gift Card for the 2nd Place Angler.



## Oyster Toadfish Tournament

### Rules

- Must be a Norfolk Anglers Club Member
- Tournament for fish caught between January 1, 2022 and December 31, 2022
- Awards determined by 1.Total Weight, 2. Date of catch, 3. Date of entry submission
- Additional Award for Best Oyster Toad Photo
- Entries submitted by email to [NorfolkAnglersClub@gmail.com](mailto:NorfolkAnglersClub@gmail.com) in the form of a Fishing Report; who was fishing, stating total weight, with photo of the fish on the scale
- Weighing need not be on a certified scale and may be done by the angler, just try an avoid weighing fish on a pitching boat
- No entry fee (we would never charge a fee for catching Toads)
- Winners will be determined by our Tournament Director

"AJ" Perez, the Oyster Toadfish Tournament Director (OTTD)





**Norfolk Anglers Club Prize Fish Entries**  
**January 1, 2022 - June 30, 2022**

<b>Freshwater</b>		<b>Saltwater</b>	
Species	Name (#Entries)	Species	Name (#Entries)
Crappie	James Eisenhower (5) Russell Willoughby (6)	Shark	Kelly Hoggard (2)
Chain Pickerel	Russell Willoughby (1)	Roundhead	Kelly Hoggard (1)
Blue Catfish	Mary Troutner (1) George Langdon (1)	Speckled Trout	James Eisenhower (8) Ned Smith (1) Bert Sainz (1) Louis Glaser (1)
		Cobia	Alex Perez, Sr (2)
		Red Drum	Kelly Hoggard (1)

\*\*\*\*Virginia Saltwater Tournament (Saltwater) or Department of Wildlife Resources (Freshwater) Citation paperwork or the Norfolk Anglers Club Prize Fish entry form must be submitted to James "Ike" Eisenhower via email to [NorfolkAnglersClub@gmail.com](mailto:NorfolkAnglersClub@gmail.com)

***For the 2022 Tournaments, ALL entries need to be submitted to [NorfolkAnglersClub@gmail.com](mailto:NorfolkAnglersClub@gmail.com)***

***Documentation from Virginia or North Carolina Fisheries or Wildlife agencies, as well as, the Norfolk Anglers Club Prize Fish paperwork is acceptable.***



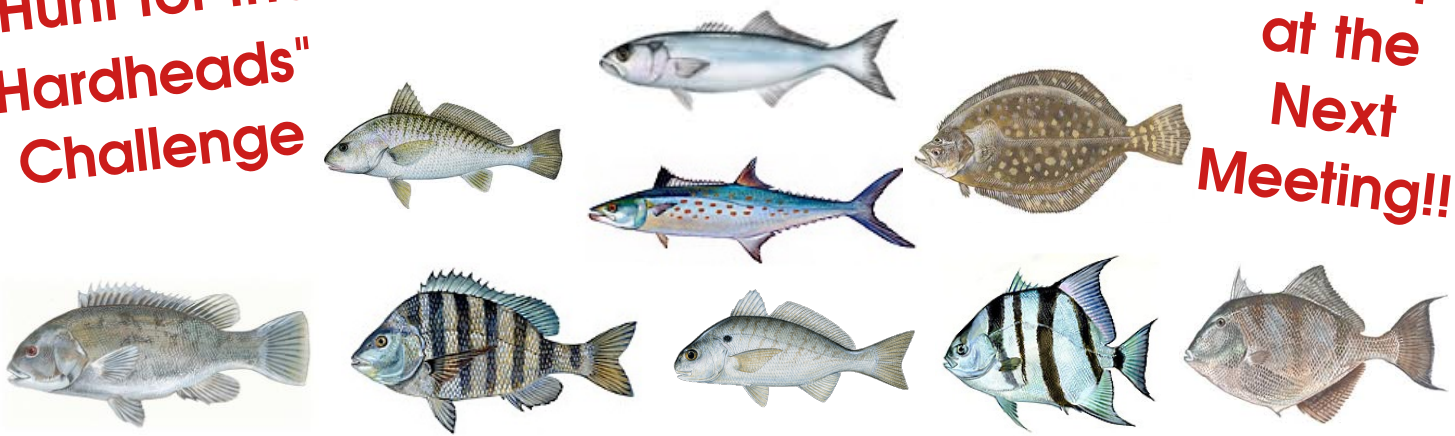
**Speckled Trout**  
**Club Members Tournament**  
**May 1st - November 30th**



- This is a Norfolk Anglers Club Members tournament running from May 1st until November 30th
- Targeted Species is Speckled Trout (any length)
- \$5 Entry Fee due before fishing
- For fish caught in Virginia and/or North Carolina waters only
- This is a Total Length Tournament Only
- Winner determined by; 1. Total Length of fish, 2. Date of Catch, 3. Date of entry submission
- 1st Place \$100 Gift Card and 2nd Place \$50 Gift Card
- All fishing must be in accordance with State fishing regulations for recreational anglers
- Entries must be submitted via the Norfolk Anglers Prize Fish Entry Form (Available at [www.NorfolkAnglersClub.com](http://www.NorfolkAnglersClub.com)) and submitted by email to [NorfolkAnglersClub@gmail.com](mailto:NorfolkAnglersClub@gmail.com)

**"Hunt for the  
Hardheads"  
Challenge**

**Sign Up  
at the  
Next  
Meeting!!**



**"Hunt for the Hardheads"  
Saturday July 23, 2022**

Norfolk Anglers Club, Virginia Beach Anglers Club,  
Tidewater Anglers Club, and Great Bridge Fishing Association

A Croaker, Bluefish, Flounder,  
Spanish Mackerel, Tautog, Sheepshead, Spot, Spadefish, Triggerfish  
fishing challenge among angler clubs.

**Date:** Saturday July 23, 2022

**Location:** Willoughby Harbor Marina, Lines In: 6:00am

**Measure In:** Starts at 12:30pm ends at 1:30pm

Entry Fee: \$10.00 per Angler. (Includes Fishing,  
Picnic, and Charitable Donation)

Picnic Only \$5.00

**Rules:**

1. Clubs are limited to 20 angler entries. No restriction on number of boats or anglers on a boat. All anglers must be members of your club.
2. Boats depart from any Virginia Port - No fishing boundaries.
3. Measurement is length only. Girth measurement determines a tie.
4. Five Points awarded for longest fish, Four Points for second longest, etc. Up to five fish entries for each species. The Club with the most points wins!





# "Hunt for the Hardheads"

**Date:** Saturday July 23, 2022

**Location:** Willoughby Harbor Marina,  
1525 Bayville St., Norfolk

**Measure In:** Starts at 12:30pm ends at 1:30pm  
Entry Fee: \$10.00 per Angler. (Includes Fishing,  
Picnic, and Charitable Donation)  
Picnic Only \$5.00

W. Oceanview Ave.

13th View  
St  
↓



## Tournament Notes

- Up to 20 Anglers per club, no restriction on fishing areas.
- Trailer Parking is available on both sides of Bayville Street, from the Marina to the Boat Ramp.  
Please, NO trailers in the Marina Parking Lot!
- Yellow Highlighted Area is the Tournament Area and Cookout
  - Bring a chair, there are no picnic tables.
- Boat mooring is available on "D" Dock only. Be aware there are areas with submerged pilings (xxxx), most areas are roped off. Tie up on the seawall side of "D" Dock

# MILITARY APPRECIATION DAY

## TIDEWATER CHAPTER



**JULY 30, 2022**

**COBB'S MARINA, 4524 DUNNING RD, NORFOLK, VA**



### BOAT & TROOP REGISTRATION

Boats: Starting May 15

Troops: Starting June 1

Via our web page

[HTTP://MILITARYAPPRECIATIONDAY.NET/MAD-CHAPTERS-TIDEWATER-VA](http://militaryappreciationday.net/mad-chapters-tidewater-va)

[FACEBOOK.COM/MADVA](https://facebook.com/madva)

### CUSTOM ROD RAFFLE

MAD-Tidewater Chapter is a **501c (3) Non-profit organization** which recruits volunteer fishing boat captains to take active duty troops out for a full day of inshore and/or offshore fishing. For the troops, the entire day and all activities and services are **FREE**. At the end of the day, the troops, their families, and boat volunteers are treated to a huge southern-style cookout – which is also **FREE**.

There will also be a **FREE** raffle of many different prizes.

This event would not be possible without the support of our generous **donors and corporate sponsors**, whose company logos will be displayed on our event banner – like the one above used at a previous event. The more you can give, the higher your sponsorship tier, the larger your banner logo, the more “mentions” on our social media, and the more we can provide to our brave troops!

No donation is too small – in kind donations are appreciated.

Keep an eye on our web page for a custom rod raffle, thanks to

*Reel Blessed Custom Fishing Rods!*

### SPONSORSHIP TIERS

PLATINUM: \$1000+

GOLD: \$500-\$999

SILVER: \$200 - \$499

*See back for details!*





**JULY 30, 2022**

**COBB'S MARINA, 4524 DUNNING RD, NORFOLK, VA**

### **BOAT REGISTRATION**

Our boat captains are invaluable – whether you're a seasoned, licensed Captain with a 43' sportfisher or a weekend fisherman with a 19' skiff, the troops could use your services! Starting **May 15**, you can go to our web site and provide some basic information such as your contact information, boat make and size, intentions for inshore/offshore fishing, # of troops that you can support, and your planned launch/return location. We will have a Captain's dinner meeting at Cobb's Marina the evening before the event, where we will distribute our Captain's buckets full of goodies and provide some important event information for everyone.

Contact our Boat Coordinator for more information.

### **TROOP REGISTRATION**

Active duty service members of all branches can register for this **FREE** day of fishing and family entertainment starting **July 1!** We will work to assign you to a boat that will fit your needs as best as we can... just remember, we can't promise that you'll be going offshore to catch record bluefin tuna! But we will do everything we can to put you on some fish!

At Cobb's Marina, while you're enjoying some Mid-Atlantic's premier fishing action, your family can enjoy a fun-filled atmosphere with Major Dave – our event DJ/emcee, Norfolk Fire Department and Rescue Squad vehicles, ice cream, face painting, cornhole, and other activities.

### **VOLUNTEER/DONOR/SPONSOR INFORMATION**

As mentioned, MAD-Tidewater is a 501(c)3 Non-profit organization (**TAX ID 81-3558648**). If you would like to donate, either use this PayPal QR code or send a check to:

**MAD-Tidewater, Inc: P.O. Box 8126, Norfolk, VA, 23503**

No donation is too small – in kind donations are appreciated. Contact our Treasurer for more information.

We can also use event volunteers as well - especially if you are skilled with a filet knife! If you want to volunteer at the event on July 30, contact our Event/Volunteer Coordinator.



### **POINTS OF CONTACT**

**President: Debra Wade**  
[wadedebra1@gmail.com](mailto:wadedebra1@gmail.com)

**Vice President: Lisa Dunn**  
[dunnsells757@gmail.com](mailto:dunnsells757@gmail.com)

**Treasurer: Shelby King**  
[shelby.king@militaryappreciationday.net](mailto:shelby.king@militaryappreciationday.net)

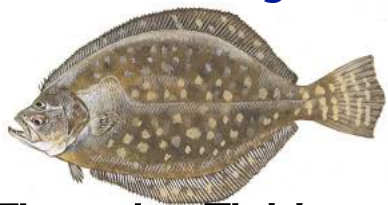
**Boat Coordinator: Brian Daniel**  
[brian.daniel@militaryappreciationday.net](mailto:brian.daniel@militaryappreciationday.net)

**Event/Volunteer Coordinator: Lisa Carroll**  
[lisa.carroll@militaryappreciationday.net](mailto:lisa.carroll@militaryappreciationday.net)



# Norfolk Anglers Club

[www.norfolkanglersclub.com](http://www.norfolkanglersclub.com)



## Flounder Fishing

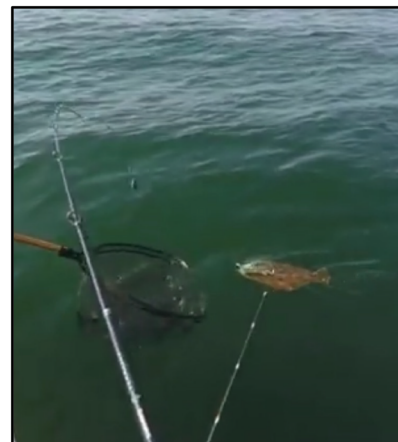
Aaron Maurer, The Savage 3 Tackle Company, Chester, VA

Late spring through the summer is prime flounder fishing time in Hampton Roads. The structure around the area bridge tunnels, inshore wrecks, and deeper structure offshore are excellent areas to target summer flounder. Aaron Maurer with Savage 3 Tackle Company in Chester, Virginia shared his flounder catching techniques fishing off the Virginia coast. Flounder love structure! he shared. Whether it's large structure that many of the area wrecks offer, bridge pilings, or low lying rubble on some of the artificial reef areas, flounder will always use the structure for protection and a source of food. Aaron explained, flounder are a look-up ambush predator. They'll lie in wait on the bottom using their brown/sand colored camouflage to wait for small prey to swim by. Then attack their prey from below or behind.

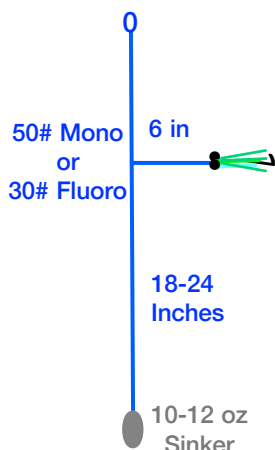
When targeting flounder there's a couple of key points to remember; holding the bottom, vertical line presentation, and drift speed. Aaron stressed that fishing for flounder requires an angler select the right sinker weight to hold the bottom without allowing the line to "scope out". Keeping your line vertical is key to a proper presentation. Lastly, drift speed should be between .5 and 1.5 knots. This slower drift speed will allow an angler to bump their rig along the structure with a minimum of hangups. When flounder fishing, snags and lost rigs are going to happen. So, prepare with enough rigs and sinkers in advance to maximize your time fishing instead of tying rigs on the boat.

While flounder have been known to swim off the bottom and attack bait fish 3 to 6 feet off the bottom, ideal placement of your lure is approximately a foot above the structure. Flounder are looking for an easy meal and a quick strike a foot above is irresistible for the fish. Aaron uses a number of techniques to put the lure in the strike zone of the flounder; Their "Pile Driver", "Dead Stick", and "M 3Way" rigs.

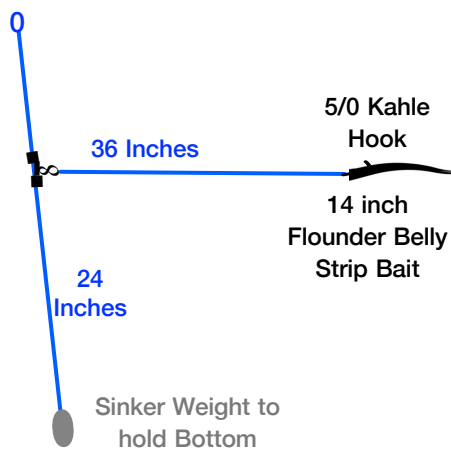
The Pile Driver rig is a classic dropper rig tied with either 50# monofilament or 30# fluorocarbon leader. It's fished vertically in the water column and designed to present the lure above the flounder. Idea for fishing structure or around bridge pilings, Aaron will typically use 10-12 ounce sinkers to keep the line vertical in moving water. The skirted lure has a 5/0 kahle hook and a silver rattle/double bead float. The short 6 inch leader and float keep the lure up above the potential snags and can be rigged with strip bait if desired (photo next page).



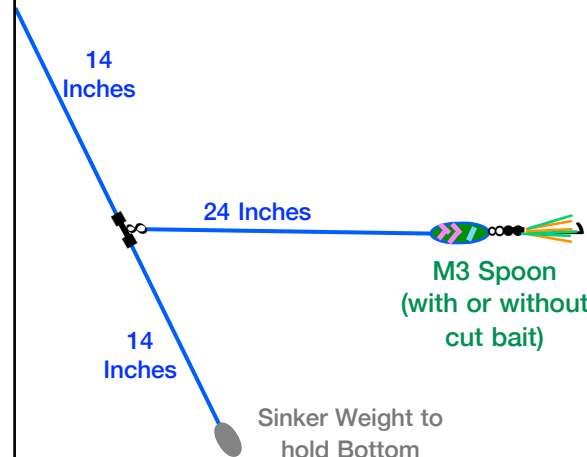
**Pile Driver Rig**



**"Dead Stick" Rig**



**M "3Way" Rig**





# Norfolk Anglers Club

[www.norfolkanglersclub.com](http://www.norfolkanglersclub.com)

## Fishing Tips...

The "Dead Stick" rig is an additional lure set out from a rod placed in a rod holder while drifting for flounder. Sinker weight needs to be adjusted for the drift speed. Aaron added, you want to select a sinker weight so the rig barely touches the bottom as you drift along. The leader is set 24 inches above the sinker and 36 inches in length. Aaron recommends a long (14 inch) strip of flounder belly rigged on a 5/0 kahle hook. The large strip bait should flow or swim from the hook so, check your bait before dropping it down to ensure it's not twisting and adjust if necessary. The leader is attached with a Ninja Drop 3 Way Swivel (see photo right) which incorporates a black nickel coated stainless steel coast-lock swivel onto a barrel swivel. A strong and unique swivel design that allows quick leader changes.

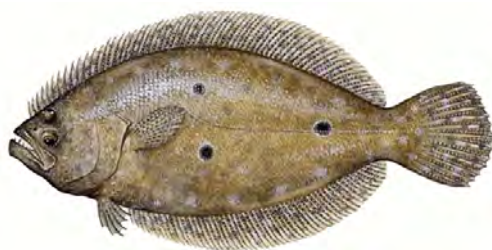


The "M 3Way Rig" is another drifting rig that has a shorter sinker drop of 14 inches and a shorter 24 inch leader. The lure is a Savage 3 Tackle design with a medium size spoon and trailing skirted lure with a 5/0 kahle hook (photo left). Aaron will occasionally rig the M3 Spoon with a cut off Gulp curl tail for additional action. There's need to use strip baits or cut bait with this lure. The swimming action, skirted tail, and small piece of a Gulp curly tail is enough to entice a flounder strike. It's a brass drifting spoon with a durable coating in a variety of colors and can be drifted, jigged, or trolled.

Another option for targeting flounder is a classic jig head. They'll use one of the SPRO 3 or 4 ounce jig heads in white, pink, or green rigged with a piece of a Berkley® Gulp® Saltwater Grub tail. To prepare the grub tail, take a 6 inch Gulp® grub tail and cut 2 inches off the head and rig it onto the SPRO jig head. You'll not need all of the artificial bait but save the cutoff piece to rig on other lures. Drop the jig head down to the bottom and bring it up about 12 inches and present the lure by giving it a constant shake as you work it up off the bottom. The action isn't a traditional jigging stroke up & down but a small shaking movement as you bring it up. The jig head/grub tail combination will provide lots of action and draw strikes. Aaron stressed the importance of using a very light braided line class, like 15# braid for your mainline. The thin line diameter creates far less drag in the water which is important for vertical fishing jig heads.



Rod/Reel combinations are really and angler's choice. Aaron prefers rods that are strong and stiff for flounder fishing with fast action tips. For vertical fishing he likes the 7 ft St Croix Mojo Inshore rod (MIC70HF) paired with a Shimano Calcutta 400B reel. Another is the 7 ft Shimano Compre (CPC-M70HD) paired with a Shimano Saltist reel. It's a heavy power rod with a fast action tip, good for dead stick fishing. For jigging there's the Berkley 7 ft 6 inch Inshore Casting Rod (medium - moderate fast) with a Penn Battle II 4000 series reel. Stiffer rods are generally the way to go with flounder fishing. The stiffer back bone in the rod will make raising the fishing sinkers easier and the moderate-fast to fast tip will provide the feel of the bite.





When it comes to flounder fishing there's a few "truths", the truth is flounder like structure and structure likes sinkers. Flounder lie in wait along the sides of structure where the current flows and draws the smaller bait fish by. There's areas without structure where you can find flounder, like the sides of the channel, but the most success is around structure. The other truth is you're going to snag rigs and sinkers in that structure. There's tactics an angler can use to minimize sinker/rig losses like anchoring up or using a very slow drift but, losses will occur. Savage 3 Tackle introduced the "Snagless Sinker" for structure fishing (photo lower left). It comes in various weights and has a stiff wire rod extending 12 inches below. Once you drop your rig down the wire rod will hit bottom and then retrieve the line until the sinker is off the bottom while the rod end drags along. As you drift the structure with a braided mainline, you can "feel" the structure and pull up or let out to maintain contact with the bottom without putting your sinker inside the structure and risk getting it snagged.

Anchoring on the wreck, while good for lessening the chance of lost rigs has a disadvantage; you only cover the portion of the bottom you're anchored over. Anglers can turn the motor one direction or the other so the boat will drift to one side or the other. You can also let out more anchor line to cover the bottom behind you. Aaron

recommends to try using a wiffle ball with a sinker inside. Fish the wiffle ball sinker just like a regular sinker until you want to move your rig further down current. The wiffle ball will provide resistance in the water and after you retrieve it off the bottom the current will carry it further away as it's lowered back down.

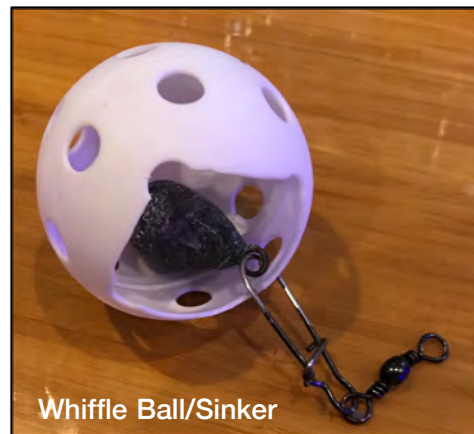
If you're drifting structure on a wreck, Aaron recommends using your chart plotter to align your drift parallel to the previous drift but to one side. Be sure to mark the position of interesting bottom contours. Flounder particularly like to congregate along the sides, ends, and any breaks in the structure. Where the current flows through a wreck or structure is where you're going to find flounder.

Live baiting for flounder is another tactic to try. Using the same "dead stick" rig for drift fishing with live bait, switch out the Kahle hook for an Octopus hook to secure your bait fish. Aaron prefers Spot over Croaker and inserts the Octopus hook through the open mouth and up & out of one nostril. Hooking them through an open mouth will help to keep them alive while fishing. He'll slow drift them behind the boat with the weight just touching the bottom.

For fishing around pilings or structure he'll use the "pile driver" rig, likewise switching the hook to an octopus hook. The size of the Spot he prefers is about the size of your hand.



Snag less  
Sinker  
(6oz)



Whiffle Ball/Sinker



7/0 Octopus Hook rigged through  
open mouth and out one nostril

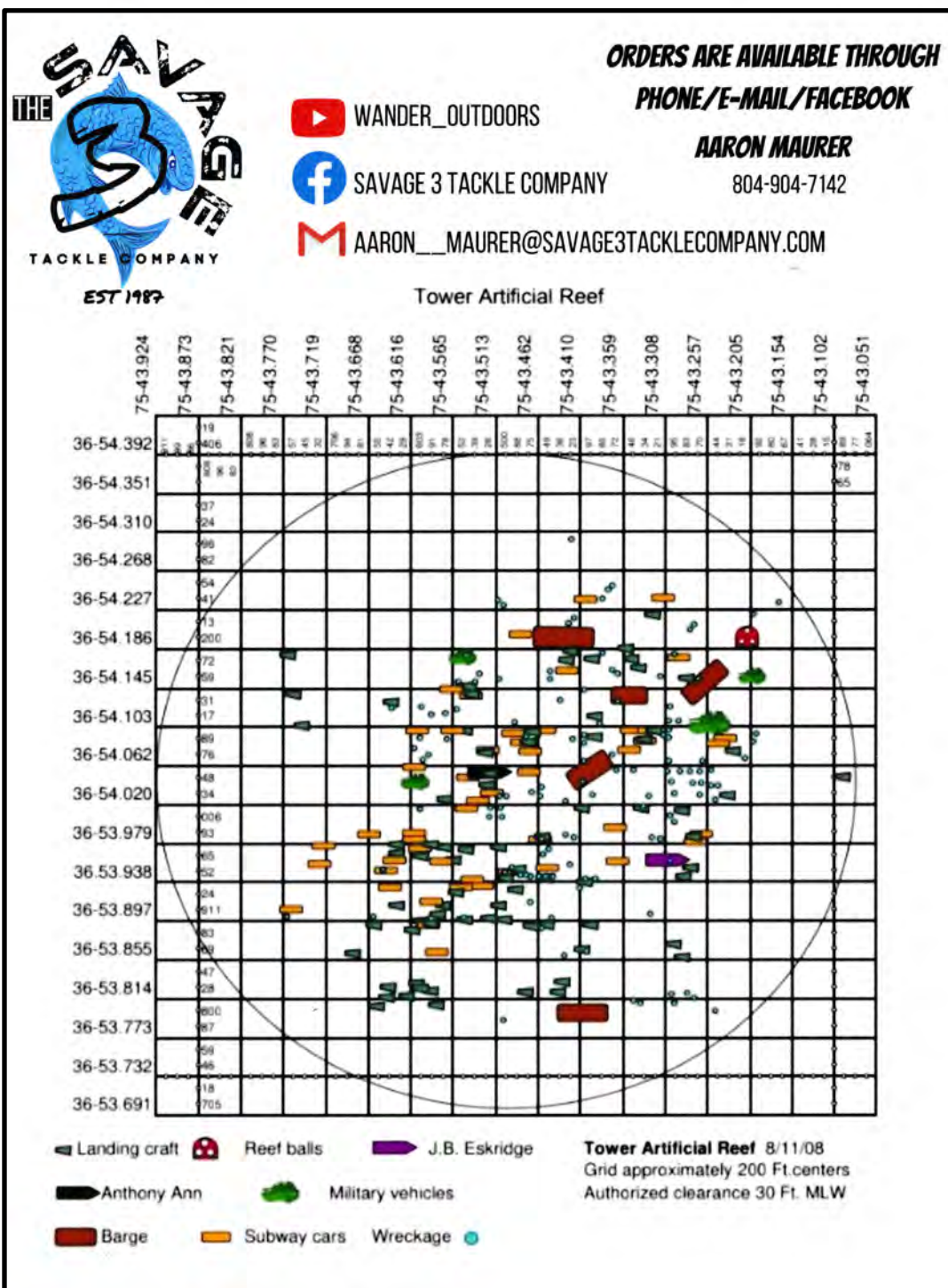


# Norfolk Anglers Club

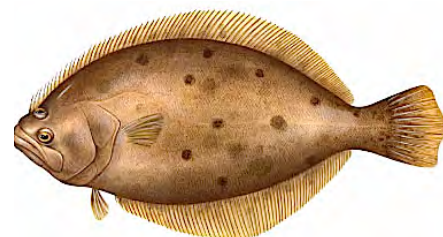
[www.norfolkanglersclub.com](http://www.norfolkanglersclub.com)

## Fishing Tips...

Structure is where you're going to find flounder and there's plenty of areas in the Chesapeake Bay and offshore to fish. The local bridge tunnels are great locations but there's a number of artificial reefs inshore and in the bay that are easily accessible by boat. The Virginia Marine Resource Commission (VMRC) began placing artificial reef sites in the 70's and has been improving them when material becomes available. Aaron shared the Ocean View artificial reef is a good location especially when weather conditions don't permit a trip to the inshore reefs. A very popular and large area inshore reef is the Tower Reef. West of the Chesapeake Light Tower VMRC has a large artificial reef area with a few vessels, large barges, military landing craft of various sizes, subway cars, tires in concrete, and other structure. You can visit [https://webapps.mrc.virginia.gov/public/maps/grids/tower\\_reef\\_grid.pdf](https://webapps.mrc.virginia.gov/public/maps/grids/tower_reef_grid.pdf) or search VMRC's website by checking out the information under Services tab and selecting Recreational Fishing. VMRC provides grid



maps like the one shown with GPS grid and a description of where structure is located. At the Tower Reef anglers make long drifts and cover large areas without having to reposition or anchor up and fish a single spot. It's strongly advised to only anchor with a wreck anchor or one of the rebar style wreck grapples that can be worked free. Anything else will likely become a permanent part of the artificial reef.



**THE SAVAGE 3 TACKLE COMPANY**  
EST 1987

**(804) 904-7142**  
**3020 South St**  
**Chester, VA 23831**



# Fishing Reports...

June 21: Mary and I headed out in the Shamrock on a beautiful morning to hunt the elusive Cobia. We launched at Wallaces and fished by chumming in 13' of water off the "Rock Pile." Mary and caught her first, and our only Cobia for the day, a short but spunky 36". Although we fished with eels, fresh bunker, and crabs on fish-finder rigs and floats, Mary's cobra was caught on a minnow while trying to catch live bait. If only I had her luck or is it skill.

- Henry Troutner



Jun 23: : The Norfolk Anglers supported the National Park Service, Back Bay Wildlife Refuge Kids Surf Fishing Program. What a GREAT TIME! More events are planned in July and August.





Jun 25: NAC members Mike Davis, Mike Hubert, Greg Rogers myself fished aboard my boat Black Swan and Chip Hubert , Mike's brother was able to join us. We fished on Saturday leaving Bluewater Marina at 4 am and had an easy trip out to the 22 fathom fingers where we started fishing just before 7 am and worked northeast to the southern wall of Norfolk Canyon. After about 2 hours we had 2 rods go down and did not hook the fish. While resetting the spread a nice yellowfin tuna came up and we hooked it. Greg was able to reel it in for our only tuna of the day . We finished off deep drop fishing and scored some Black Sea bass and blueline tilefish before heading home at 40 mph with a following sea!

- Jackson B. Salvant Jr., M.D.





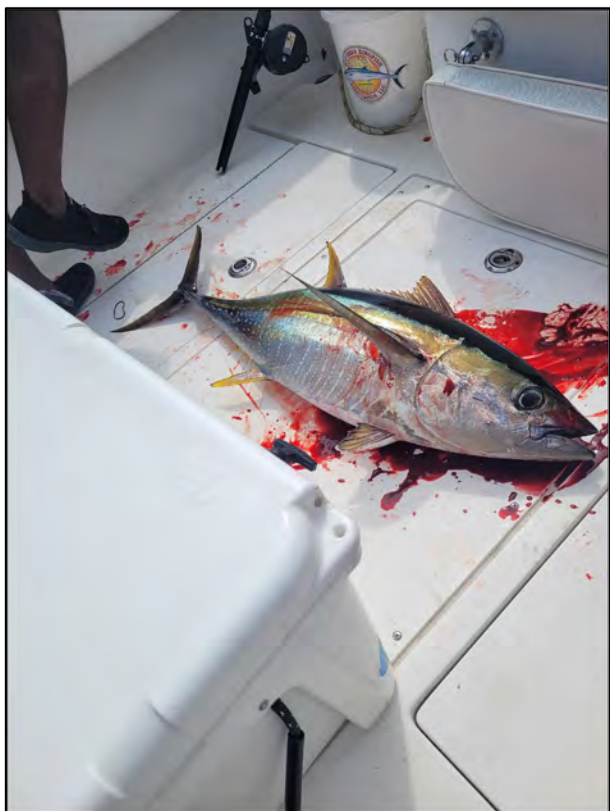
Jun 25: Being retired I try not to fish on weekends. Unfortunately my daughter Kait & her boyfriend Kevin work for a living. On Saturday they wanted to go crabbing but the weather looked good for an inshore trip. I convinced them to go fishing. We launched the Shamrock at Owl Creek, a mad house with boats. First stop the Santore. We caught a half dozen tog (out of season), Several sea bass (1 keeper at 14") and of course toadfish. We moved out to the tower, which was a parking lot of boats. Never saw so many decent size Spadefish swimming around but didn't catch any and only saw a couple caught. Moved to the Tower Reef and drifted for flounder. Caught 3 (2 keepers) and another 14" sea bass. Heading in, a quick stop at the Santore. More tog and small sea bass. Had a good size Cobia swim right up to the boat. Tried casting a jig, which he/she followed around but wouldn't hit. Bait: fiddlers, squid, minnows, clam.

- Henry Troutner



Jun 15: The weather was predicted as perfect so Mary, George Langdon, and I launched the Shamrock at Wallaces and headed to the 3rd Island for some Spade fishing. Usually by mid-June the 3rd Island is loaded with big Spadefish but we fished for 4 hours without a bite. There were about 8 other boats also fishing and we did not see anyone catch a fish. About noon time we moved to the 2nd Island where we caught 2 tog (out of season) and Mary caught 2 nice Triggers. We saw Mike Hubert troll by looking for Spanish and Bluefish. His new Glacier Bay is beautiful. Hope the Spades show up soon.

- Henry Troutner



Jun 4: Robert Oliver, "Ike" Eisenhower, Russel Willoughby, Rob Stommel and Dave Schippers and Patty Searby set out aboard the Charter boat Teasn with Captain Joe Guffey and mate Steve Gadlin. While the seas were rough to begin the trip conditions couldn't have been more promising further south as we traveled. Once we arrived at the Jet Stream the skies were clear, winds were calm, and the water was slick as a mirror. It took about two hours to reach our destination, just 70 miles offshore. Captain Joe chased the tuna hoping to get us on some action. Finally, we had a fish on and Ike started to fight the fish and it put up a pretty good fight but while maintaining trolling speed to keep all rigs clear of the fish he couldn't gain on him. Rob took over as the captain turned to boat allowing him to gain line. At that point when we thought we had lost the fish it turned out he was heading towards the boat. Good thing Captain Joe and Steve were there to gaff the fish and get it on deck. Unfortunately, this was the only fish we caught all day. I don't know what everyone else did with their share of the catch, but my wife and I feasted on grilled tuna and sashimi. What can I say...it was a beautiful day to go fishing and that is what we did!

- James "Ike" Eisenhower



Jun 4: We trolled Clark spoons from the mouth of the Lynnhaven Inlet to the third island of the Chesapeake Bay Bridge Tunnel (CBBT). The pink and chrome #00 spoon on a 20 pound test leader had the most bites catching four Bluefish up to 15 inches and one Spanish Mackerel also at 15 inches.



Once the clouds parted, allowing the sun to shine through, we headed north up the Chesapeake channel looking for Cobia. Using two ounce bucktail jigs we saw a total of six Cobia, only fooling two into biting at 38 and 52 inches.



Both Cobia were tagged for the Virginia Game Fish Tagging Program and released healthy.

- Alex Perez, Sr.



**Chic's Beach Rental & Fishing**  
*everything you need to enjoy the beach.....  
& catch your dinner!!*

**Daily, Weekly & Monthly Beach Rentals**  
**All Beach & House Accessories Provided**  
**Beach Rental/Charter Fishing Packages**

[www.chicsbeachrentalandfishing.com](http://www.chicsbeachrentalandfishing.com)  
[grif4408@verizon.net](mailto:grif4408@verizon.net)  
follow the fishing on facebook!

Capt. Mike Griffith  
USCG Licensed  
757-687-9093

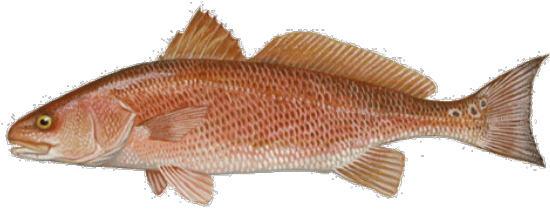




Jun 4: With a steady North wind, I spent the morning doing Vessel Safety Checks at the Norfolk Yacht & Country Club. Fishweather predicated the wind to drop and shift to the Southeast a bout 5 PM. So, Mary, Kait, Kevin and I launched the Shamrock at Lynnhaven and Headed for Nautilus Shoal the try for some big drum. We were set up by 5:30PM with an outgoing current and fished until it changed at 9PM. Not a bite! Although we did have one big one appear right next to the boat and disappear as I manned the jig rod.

Jun 6: With the wind blowing, Mary & I launched the skiff and fished the Chuckatuck. As usual the state of the tide was not what I suspected and the water was very low and the current still heading out. We couldn't fish our usual spots so we headed up the creek to drift the channel. Mary soon caught a nice white perch and as I was unhooking it my rod was all but pulled into the water. Grabbing the rod I landed a nice 19" drum (only 1 spot.) Mary caught another perch before we called it a day.

- Henry Troutner



Jun 30: NAC Angler Chris Webb and I launched out of Rudee Inlet early to try our luck on the inshore wrecks. We fished the Santore wreck and found a lot of juvenile black sea bass, small flounder, some oyster toads, and gray triggerfish. We tagged the sea bass and flounder, cursed the oyster toads and released them all, except for the triggerfish. They all went into the fish box. We moved over to the Tower Artificial Reef and made a few long drifts without much success. We saw a lot of spadefish, put out some conch candy chum and baited up spadefish rigs but couldn't get them to strike. Briefly tried the Brass Spike wreck further offshore but the seas and wind made the drift very difficult so we moved on to the offshore wind turbines which were only another 5.5 nm away. We caught and tagged plenty of sea bass 10-12.75 inches. If you haven't had the opportunity to fish around these midshore monopiles, what you'll find is an abundance of life around the structure and in the rock surrounding it. Imagine what fishing will be like in a couple of years when Dominion Energy places another +170 of these structures offshore!

- Will Bransom

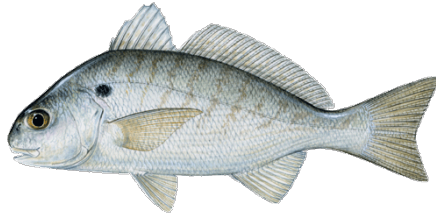






Jun 19: Took my friend Burt Whitt and his grandson Russell spot fishing in Pretty Lake this morning for 2hrs. Spot getting bigger. Fish around Pretty Lake Bridge using fish bites and night crawler worms.

- Louis Glaser



Jun 12: Took a short run to the Chuckatuck. Gave up on stripers and was floating a popping cork with a minnow along the bridge supports in 2 1/2 feet of water trying for a puppy drum. Caught this 23 inch striper.

- John Curry



## Help Starts Here.

*Membership has its benefits.*

**Benefits like priority service, free fuel delivery, jump starts, and dock-to-dock towing all add up to big savings.** Last year, Sea Tow® members saved over \$20 million in services.

*Join today and SAVE \$20.*

**USE PROMO CODE: FCD.**

FOR ANGLER CLUB MEMBERS ONLY. OFFER EXPIRES JUNE 1, 2023.

**Sea Tow Hampton Roads**

757-496-1999 \ seatow.com

**SEA TOW**





# Angler Interests

## Coastal Virginia Offshore Wind (CVOW) Update



**Dominion  
Energy®**

Dominion Energy will be initiating an unexploded ordnance (UXO) survey within the export cable corridor and CVOW lease area beginning in July 2022. The vessels to be deployed and the areas to be surveyed are identified below.

Mariners transiting or fishing in the survey area are requested to provide a 0.5 NM wide clearance to survey vessels, which may have limited maneuverability due to towing gear up to 1,000' behind the vessel. Mariners should operate in a manner that will not endanger themselves, the survey vessels, its crew or the equipment.

All mariners are encouraged to contact Dominion Energy's Fisheries Liaisons below with any specific questions about the status of the projects in relation to fisheries.

### Contact Fisheries Liaisons

#### Sea Risk Solutions, LLC

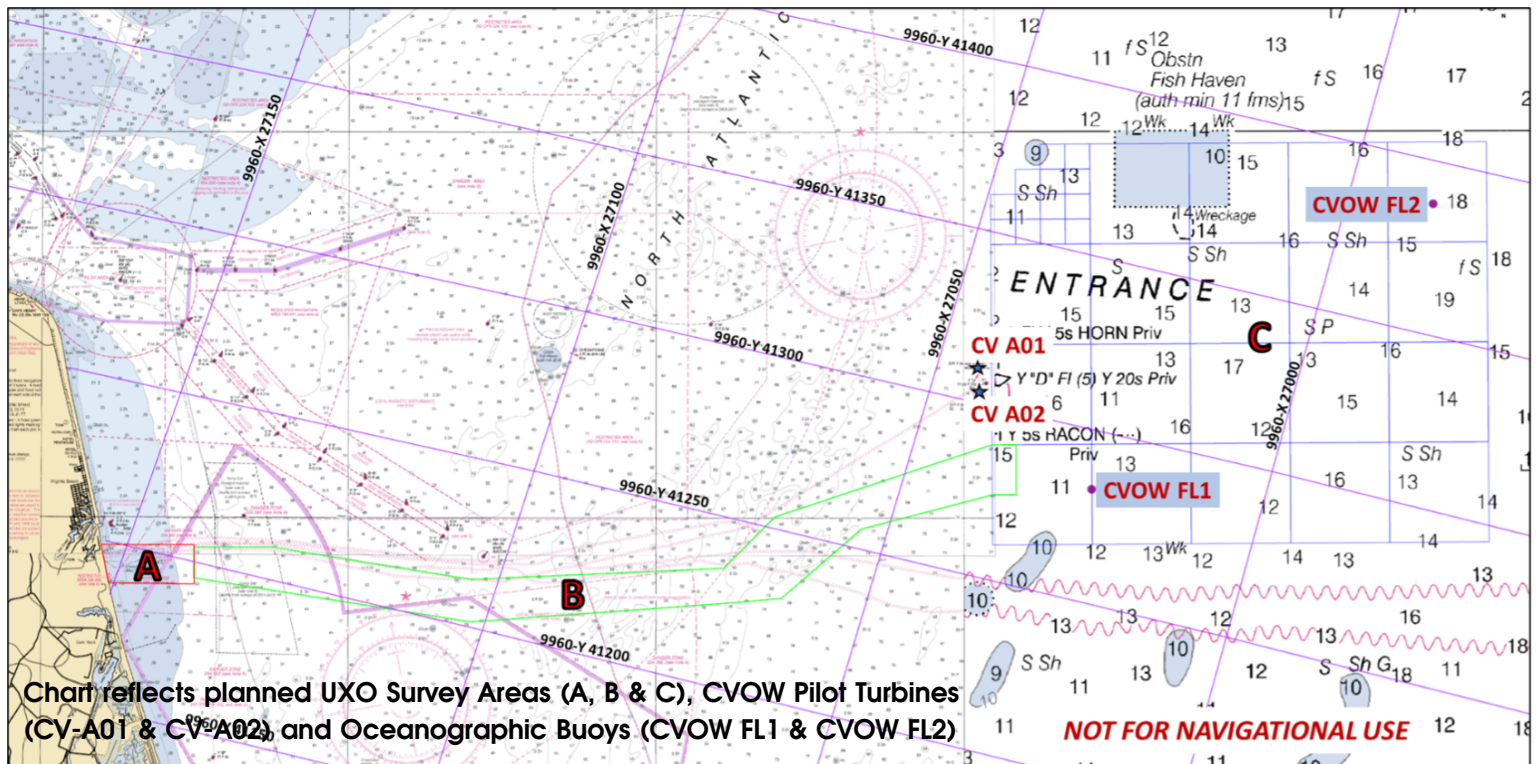
Ron Larsen (Fisheries Liaison Officer)  
(570) 242-5023, ronlarsen@searisksolutions.com

Wolfgang Rain (Fisheries Liaison Officer)  
(206) 427-6553, wrain@searisksolutions.com

#### Dominion Energy

Jerry Barnes (Manager, Marine Affairs)  
jerry.r.barnes@dominionenergy.com

Scott Lawton (Environmental)  
scott.lawton@dominionenergy.com





# Angler Interests

## Henry Hudson

Daylight only operations in Zone A beginning 01 AUG-2022  
Call Sign: WDG4894  
Flag: USA  
MMSI: 367541190  
LOA: 45 ft  
IMO: -  
Beam: 15 ft



## Minerva Uno

24/7 operations in Zone B & Zone C beginning 07-JUL-2022  
Call Sign: IZVM  
Flag: Marshall Islands  
MMSI: 247080700  
LOA: 155 ft  
IMO: 9262077  
Beam: 30 ft



## Shearwater

24/7 operations in Zone B & Zone C beginning 21-JUL-2022  
Call Sign: WDF5838  
Flag: USA  
MMSI: 368528000  
LOA: 110 ft  
IMO: 8993966  
Beam: 39 ft





# NEWS RELEASE



Robert E. Beal, Executive Director

Christopher Moore, Ph.D., Executive Director

FOR IMMEDIATE RELEASE:

June 13, 2022

MAFMC PRESS CONTACT: Mary Sabo, 302-526-5261

ASMFC PRESS CONTACT: Tina Berger, 703-842-0749

## **MAFMC & ASMFC Take First Step Toward Recreational Management Reform for Bluefish, Summer Flounder, Scup and Black Sea Bass**

The Mid-Atlantic Fishery Management Council (Council) and the Atlantic States Marine Fisheries Commission's Interstate Fisheries Management Program Policy Board (Policy Board) approved changes to the recreational fisheries management programs for summer flounder, scup, black sea bass, and bluefish. The changes include a new process for setting recreational measures (bag, size, and season limits) and modifications to the recreational accountability measures. The Council recommended these changes through a framework action, and the Policy Board adopted the new process through Addendum XXXIV to the Summer Flounder, Scup, and Black Sea Bass Fishery Management Plan (FMP) and Addendum II to the Bluefish FMP. Approval of this new process is part of a broader long-term effort by both the Council and Commission to improve recreational management of these four species. The new management program aims to provide greater stability and predictability in recreational measures from year-to-year while accounting for uncertainty in recreational catch estimates.

The Council and Policy Board considered a range of management options and ultimately selected one referred to as the "Percent Change Approach," with an agreement to continue development of several other options for possible implementation by 2026. Under the selected approach, managers will consider two factors when determining whether recreational measures should be restricted, liberalized, or remain unchanged for the next two years. First, they will look at how recreational harvest limits (RHLs) for the next two years compare to recent estimates of recreational harvest. This gives an indication of whether recreational harvest is likely to exceed the RHL if management measures remain unchanged. Next, managers will consider the most recent estimate of stock size relative to the target stock size. These two factors, in combination, will be used to determine the percentage change in harvest that management measures should aim to achieve.

Under the new process, when recent harvest estimates are close to the future RHL, management measures will either remain unchanged or be reduced or liberalized by 10%, depending on stock size relative to the target. In cases where the RHL is substantially above or below recent harvest estimates, the specific reduction or liberalization will vary based on stock size and will either be fixed at 10% or will be based on the difference between recent harvest and the RHL but capped at 20% or 40% (see [this table](#) for additional details). The Council and Policy Board selected this option because it uses currently available data and gives additional consideration to stock status when making management decisions. Under this approach, changes will be considered every other year when new scientific information about the stock is available.

While the Percent Change Approach is similar in some ways to the current process for setting recreational measures, there are several key differences. To account for uncertainty in recreational data, future RHLs will be evaluated relative to the confidence intervals around recent recreational harvest estimates. A confidence

*Given summer flounder, scup, black sea bass, and bluefish's presence in, and movement between, state waters (0-3 miles from shore) and federal waters (3-200 miles from shore), the Atlantic States Marine Fisheries Commission (ASMFC) and the Mid-Atlantic Fishery Management Council (MAFMC) jointly manage these species.*

[www.asmfc.org](http://www.asmfc.org)

[www.mafmfc.org](http://www.mafmfc.org)



interval indicates the range of possible values given the statistical uncertainties around the estimate. The new process also places greater emphasis on stock status, potentially reducing the magnitude of changes when the stock status is healthy. Finally, the new process will provide greater stability, as measures will be set for two years at a time instead of every year.

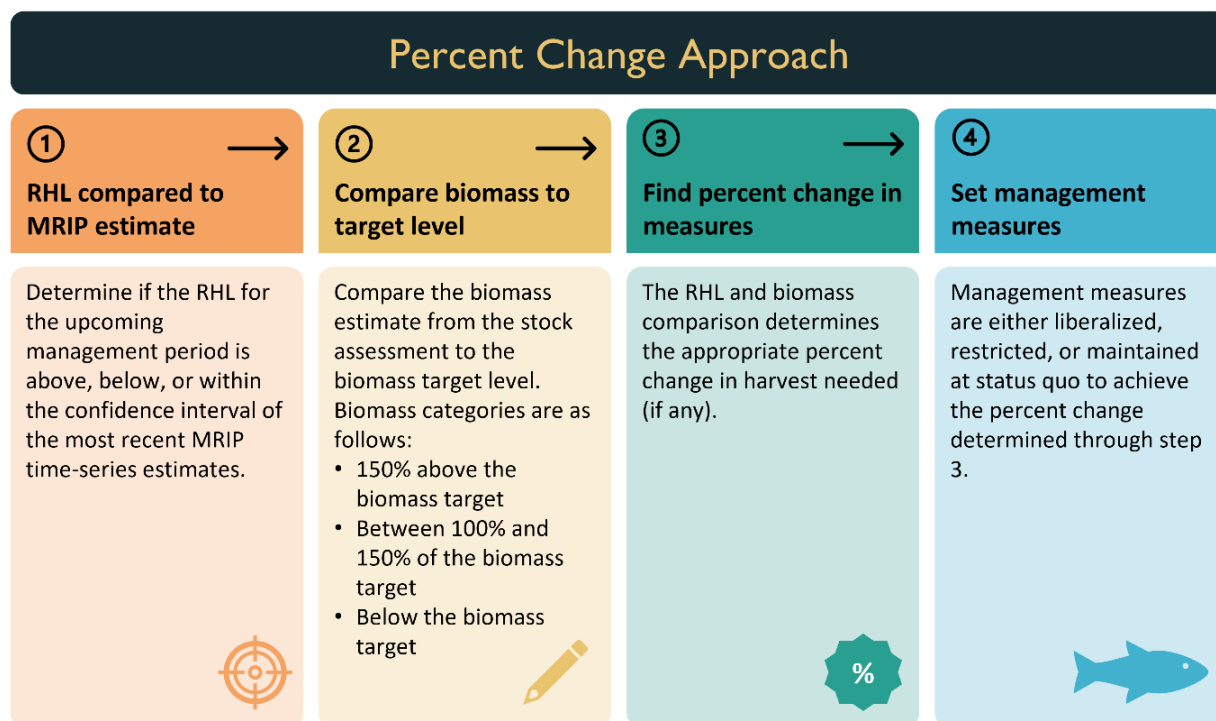
The Council and Policy Board acknowledged this approach will not solve all recreational fisheries management challenges. With this in mind, they agreed to continue refinement of the Percent Change Approach as well as two other options considered within the Draft Framework/Addenda, with particular emphasis on using improved statistical models to develop measures. Use of the approved Percent Change Approach will sunset no later than the end of 2025 with a goal of implementing a new and improved approach to managing the recreational fisheries by the beginning of 2026.

The Council and Policy Board also revised the recreational accountability measures for all four species. Specifically, when biomass is between the target and threshold levels, the requirement of paying back recreational catch limit overages will account for whether those overages contributed to overfishing based on the most recent stock assessment information.

The Council and Policy Board considered but did not recommend an option to set constraints around the use of the Commission's conservation equivalency policy as applied to the recreational fisheries for these four species. They decided to maintain the current policy to allow individual states the flexibility to tailor management measures to meet the needs of their fisheries.

The Framework/Addenda's changes to the recreational management program are final for state waters (0-3 miles from shore) and will be used to develop 2023 recreational measures for summer flounder, scup, and black sea bass. The new process will not be used for bluefish until the stock is declared rebuilt. The Council will submit the framework to NOAA Fisheries for review, approval, and implementation.

For more information, please visit <https://www.mafmc.org/actions/hcr-framework-addenda> or contact either Julia Beaty, Mid-Atlantic Fishery Management Council, ([jbeaty@mafmc.org](mailto:jbeaty@mafmc.org), 302-526-5250) or Dustin Colson Leaning, Atlantic States Marine Fisheries Commission, ([dleaning@asmfc.org](mailto:dleaning@asmfc.org), 703-842-0740).



# Select Recreational Fishing Regulations

May 2022



## Atlantic Croaker

- Minimum Size Limit: No size limit
- Recreational Bag Limit: 50 per person; additional 50 live bait per customer capacity on for-hire or charter vessels



## Spot

- Minimum Size Limit: No size limit
- Recreational Bag Limit: 50 per person; additional 50 live bait per customer capacity on for-hire or charter vessels



## Kingfish

- Minimum Size Limit: No size limit
- Recreational Bag Limit: No bag limit



## Grey Trout (Weakfish)

- Minimum Size Limit: 12 inches
- Recreational Bag Limit: 1 per person



## Bluefish

- Minimum Size Limit: No size limit
- Recreational Bag Limit: 3 per person from shore or a rented or private vessel
- 5 per person on for-hire or charter vessels



## Spanish Mackerel

- Minimum Size Limit: 14 inches
- Recreational Bag Limit: 15 per person



## King Mackerel

- Minimum Size Limit: 27 inches
- Recreational Bag Limit: 3 per person



## Cobia (Permit Required)

- Minimum Size Limit: 40 inches
- Recreational Bag Limit: 1 per person or 2 per vessel, whichever is more restrictive. Only 1 fish per vessel may be greater than 50 inches total length.
- Season: June 15 - September 15



## Summer Flounder

- Minimum Size Limit: 16 inches
- Recreational Bag Limit: 4 per person



## Striped Bass

Any person fishing striped bass recreationally shall use non-offset, corrodible, non-stainless steel circle hooks when fishing with bait.

### Chesapeake Bay Spring Season

- Size Limit: 20-28 inches
- Recreational Bag Limit: 1 fish per person
- Season: May 16 - June 15

### Chesapeake Bay Fall Season

- Size limit: 20-36 inches
- Recreational Bag Limit: 1 fish per person
- Season: October 4 - December 31

### Coastal Season

- Size Limit: 28-36 inches
- Recreational Bag Limit: 1 per person
- Season: January 1 - March 31, May 16 - December 31

**Select species provided for information purposes only. Not all regulated species are included. All regulations are subject to change. It is the angler's responsibility to know and abide by all current regulations and laws. Check for new regulations before you go fishing. [www.mrc.virginia.gov](http://www.mrc.virginia.gov)**



## Spadefish

- Minimum Size Limit: No size limit
- Recreational Bag Limit: 4 per person



## Sheepshead

- Minimum Size Limit: No size limit
- Recreational Bag Limit: 4 per person



## Black Sea Bass

- Minimum Size Limit: 13
- Recreational Bag Limit: 15
- Season: May 15-December 11



## Tautog

- Minimum Size Limit: 16 inches
- Recreational Bag Limit: 4 per person
- Season: January 1-May 15, July 1- Dec. 31



## Speckled Trout

- Minimum Size Limit: 14 inches
- Recreational Bag Limit: 5 per person, only 1 greater than 24"



## Red Drum

- Minimum Size Limit: 18 inches
- Maximum Size Limit: 26 inches
- Recreational Bag Limit: 3 per person



## Black Drum

- Minimum Size Limit: 16 inches
- Recreational Bag Limit: 1 per person